

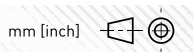
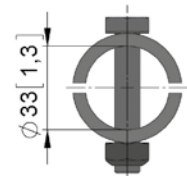
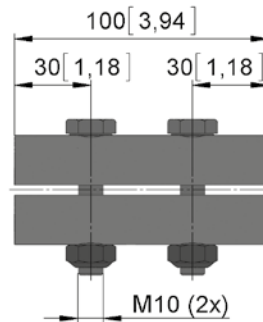
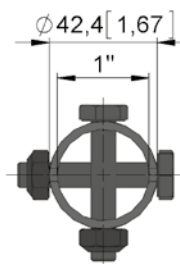
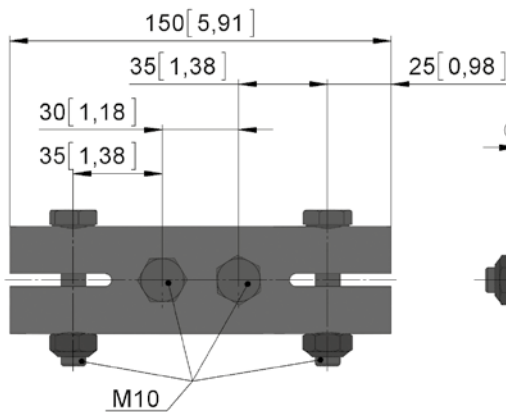
# ARV 60 // Tube connector



- Tube connector for positive connection torque transmission to 1" tube.
- ARV 60.1042: one-part tube connector with screws and lock nuts.
- ARV 60.1044: galvanised half shells with screws and lock nuts.

ARV 60.1042

ARV 60.1044



Version	Type no.	Info	m [kg]
ARV 60.1042	81660.1042.3415	Tube connector // Incl. 4 screws and lock nuts	0,6
ARV 60.1044	81660.1044.3410	Tube connector // Incl. 2 screws and lock nuts	1,0