

LSR 25 // Ventilation controller



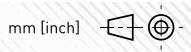
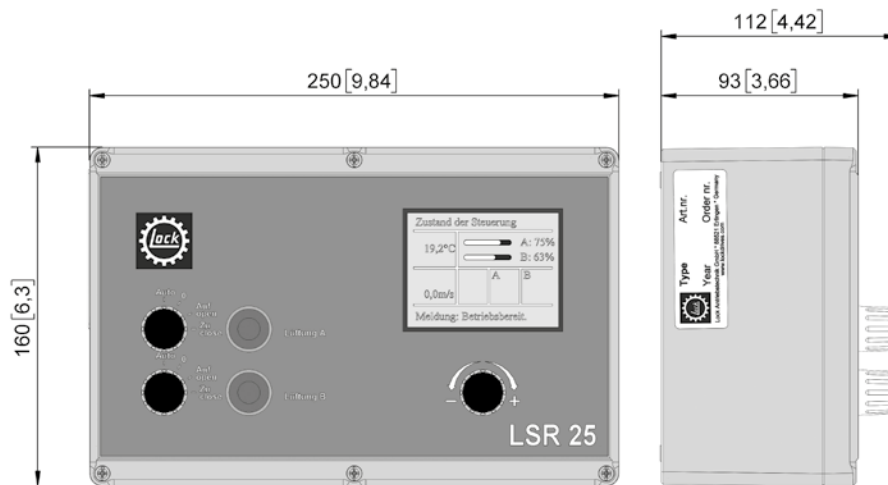
- Temperature-dependent ventilation controller
- Integrated switch-indexing function for strong wind conditions.
- Independent settings for recording operating hours are possible for drives A and B.
- Option for connecting up a wind sensor and a rain sensor.
- One temperature for two 230 V 1~ drives – connectable directly.
- Easy to operate using a big colour monitor.
- Independent runtime recording, minimum opening and maximum opening of side A and B possible.
- Temperature setpoint value can be set between -20°C and +60°C.
- Ability to set indexing and interval times as well as hysteresis.
- Plastic housing, including a temperature sensor.
- “Vibration function” to prevent unit from freezing solid.
- Possible to override manual indexing function.
- Integrated counter for operating hours.
- Integrated emergency stop circuit (an accessory).

Options:

- Wind sensor WST 15 (page 4).
- Rain sensor RST 65 (page 5).

Tip:

- Advice from our climate experts.



Version	Type no.	U [V]	m [kg]
LSR 25.1001	30225.1023.0101	230	1,0

Accessories



Version	Type no.	Info	m [kg]
TST 25.1001	30925.1001.0101	Emergency stop switch	0,2