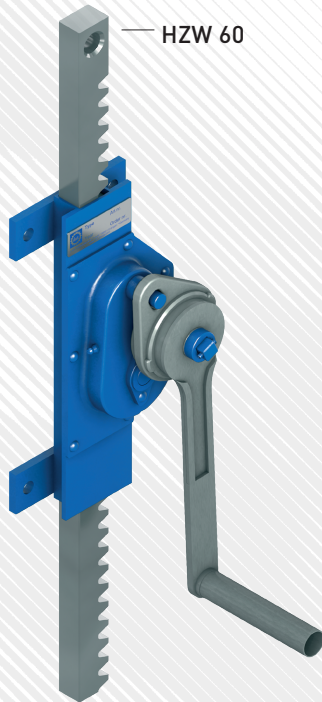


HZW 60 // Rack and pinion wall jack DIN 7355

15–100 kN



- FIN 7355 compliant rack-and-pinion jacks designed for wall mounting.
- They are suitable for positioning slides, conveyors, work tables, etc.
- Operating temperature permanently -20 °C (-4 °F) to 60 °C (140 °F) (operating temperature static up to 90 °C/194 °F)

With danger alert

- The gear units are not self-locking.
- The holding torque is achieved by the transmission and locking the crank system.
- The application must be secured by a secondary method (e.g. staking) for protection in the event of failure of the holding force.
- A connection to the supporting structure must be evaluated/designed by the customer.

Direction of force of gear unit/winch

- Due to asymmetrical gearing, the standard version may only be loaded in one direction (compression or tension).
- The installation position of the winch must be observed during assembly.
- A maximum of 5 % of the crank force is permitted against the direction of force.
- Also available for compression and tension with symmetric toothing and pressure roller safety crank.
- The pressure roller safety crank can also be mounted on a steel winch with asymmetrical toothing.
- The advantage is that the crank is quiet and cannot come loose under vibration (e.g. container lid on a truck).
- All cranks are galvanized without painting.

| Type | Load [kN] | Stroke [mm/n] | Crank force [N] |
|------------|-----------|---------------|-----------------|
| HZW 60.15 | 15 | 14,0 | 280 |
| HZW 60.30 | 30 | 9,0 | 280 |
| HZW 60.50 | 50 | 4,5 | 280 |
| HZW 60.100 | 100 | 3,2 | 400 |